

## Which Head is the Correct Ed?

### Game Instructions:

#### (One Player)

1. Cut out all the heads.
2. Place the yellow, green, and purple heads in a row face up.
3. Shuffle the blue heads and place them face down in a random pile far enough away from the 3 other heads so that your student has to move.
4. Set a timer for 1 minute.
5. Start the timer and have your student place as many blue heads on the correct sound head as he/she can.
6. Once time is called, check to make sure that your student placed the blue heads in the correct pile.
7. Then have your student read the words in each pile.
8. For every word your student reads correctly, he/she gets one point.
9. Total up the number of points your student got and match it to the score sheet.
10. Have your student place a sticker in the correct spot.

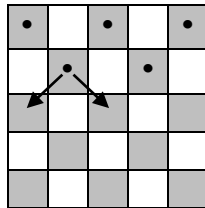
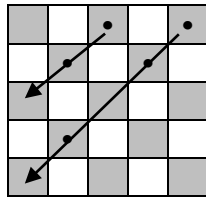
## Ed Checkers

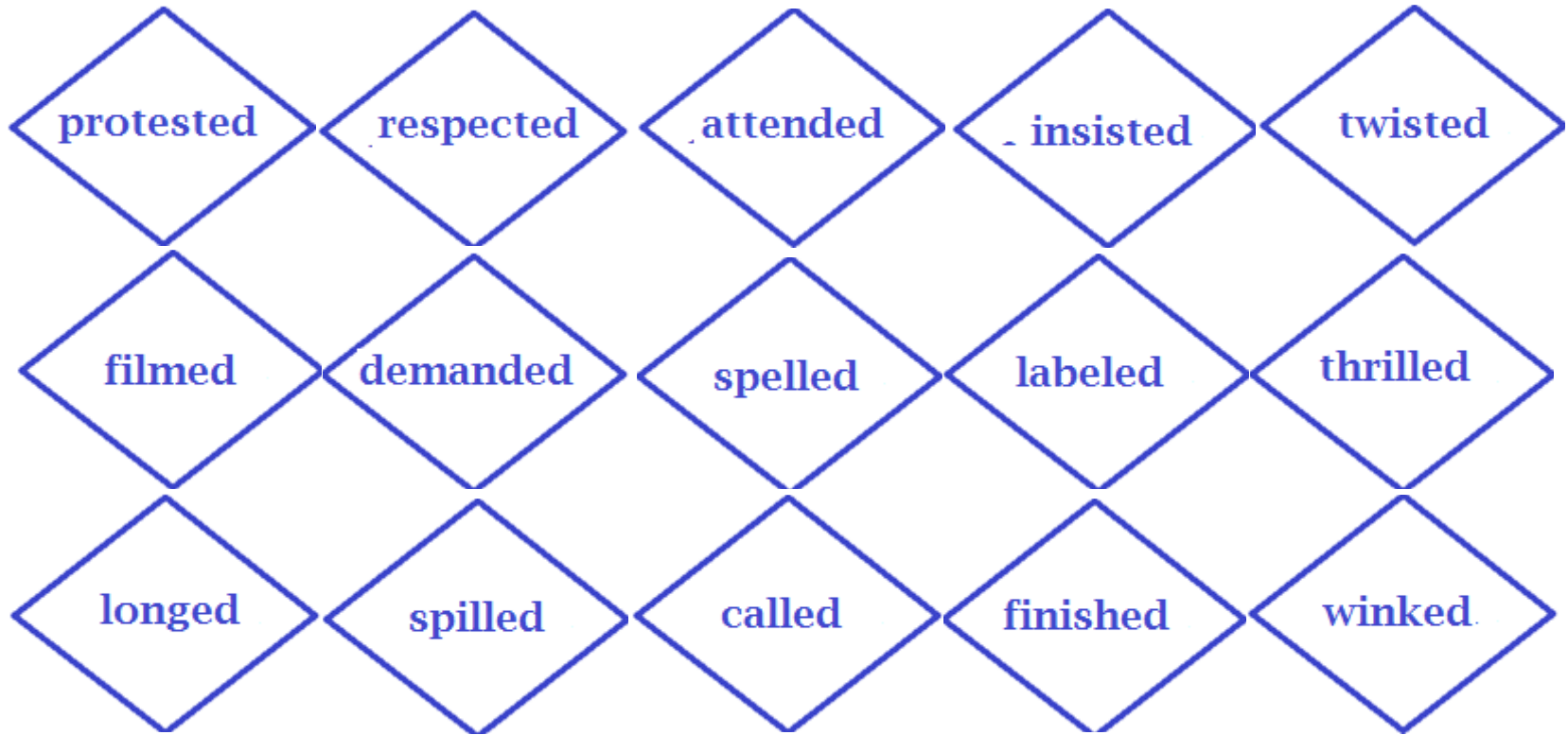
### Game Instructions

#### (One Player)

1. Place the blue diamond checker board between you and your student.
2. Get out 16 checker chips and divide them evenly between you and your student.
3. Have your student place his/her 8 checker pieces on the eight diamonds closest to him/her. Do the same on your side of the game board.
4. Take turns moving your checker pieces forward one diamond at a time. If you move onto a space with a word, you must read the word on the space. In order to get out your opponent's checker pieces, you must jump over his/her checker pieces onto an open space on the board.
5. Continue play until someone gets out all of his/her opponent's checker pieces.

#### Ways to move on the game board/ jump over opponent's checker pieces:





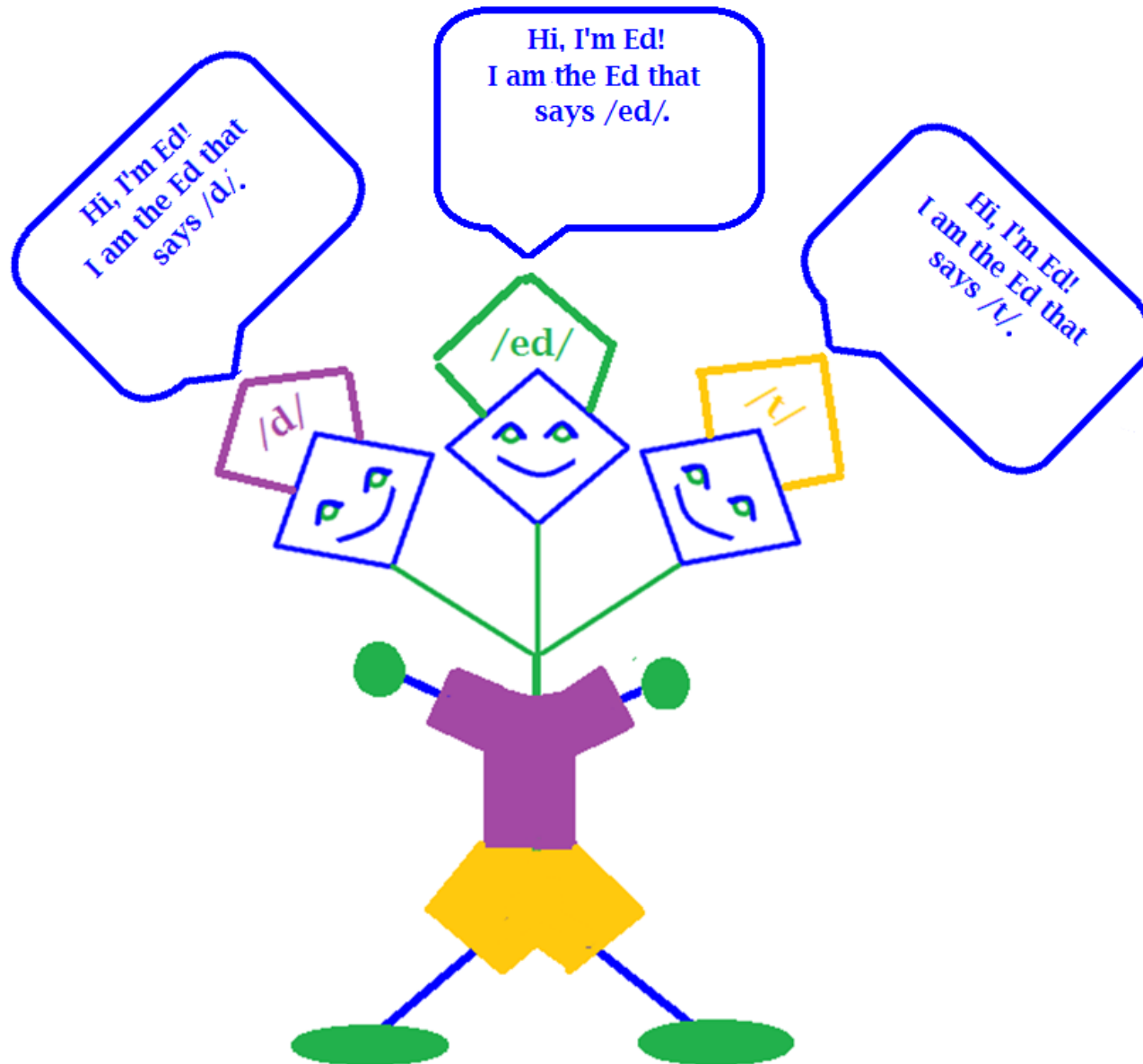
impressed yanked stamped crunched punished  
disrupted honked talented stalled brushed

**/d/**

**/ed/**

**/t/**

# The many sounds of Suffix ed





# Score Sheet

<b>Game:</b> <b>Date:</b>	<b># Correct:</b>	<b>Place Sticker Here</b>
------------------------------	-------------------	---------------------------